

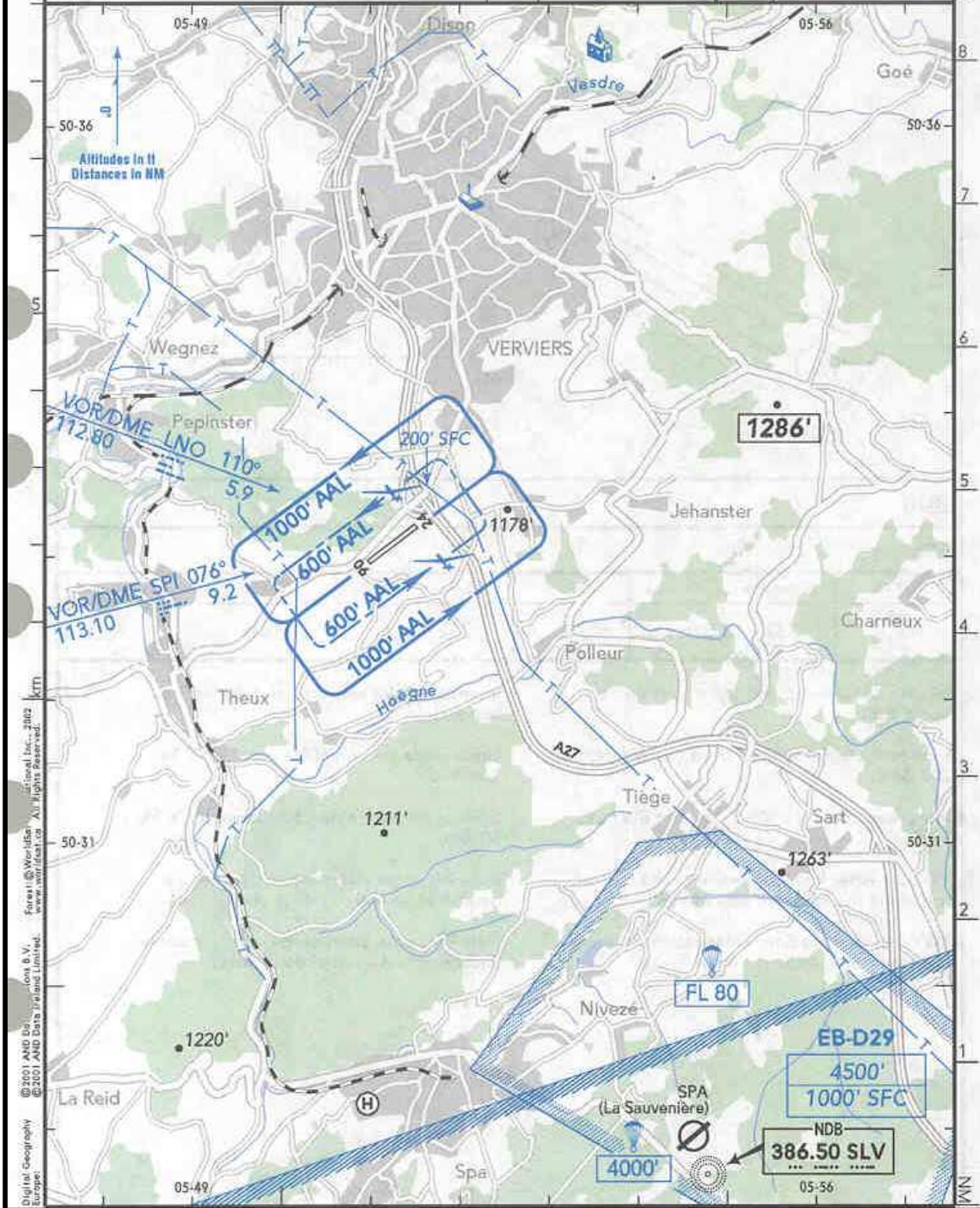
EB1A
 Elev **1099'** / 335m
 N50 33.2
 E005 51.3

THEUX
BELGIUM
 2.5 NM S Verviers

(AFIS)
 THEUX RADIO **119.00** (fr)

RWY	ILS	RWY	ILS

SCALE 1:100 000

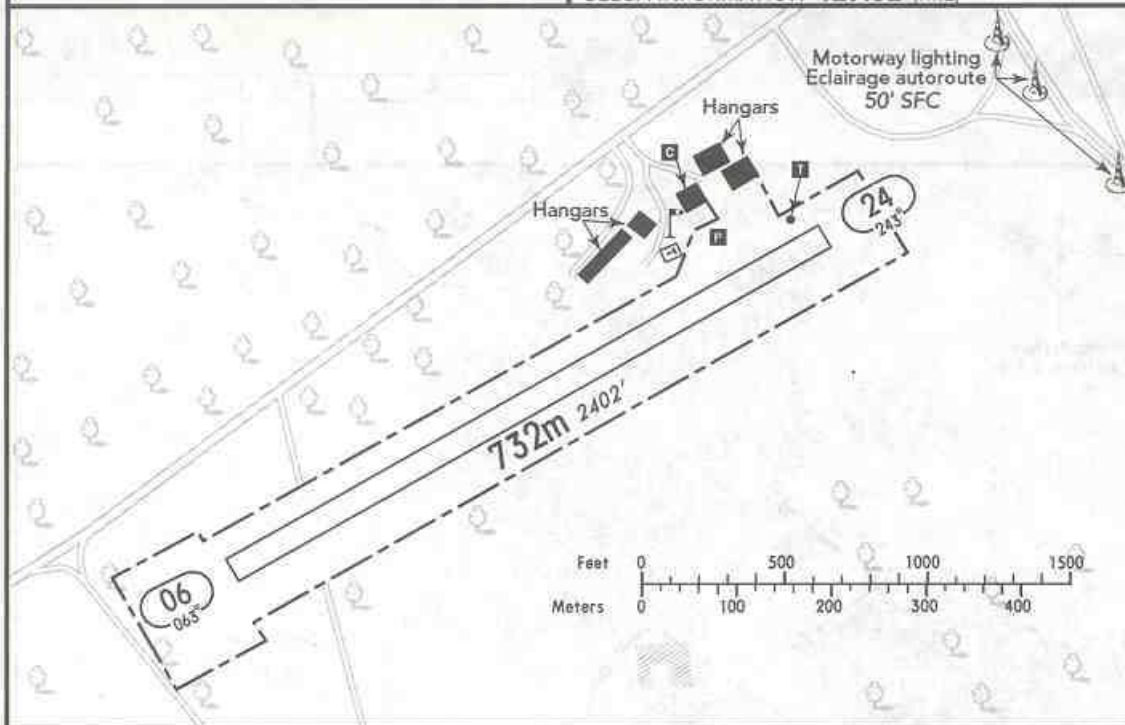


© 2001 AEG, Inc. All Rights Reserved. AEG, Inc. 2002
 Digital Geography
 Europe
 Firefly @ Veridian
 www.veridian.com
 All Rights Reserved.

THEUX
BELGIUM



(FIS)
BRUSSELS INFORMATION **126.90** (CIV)
BELGA INFORMATION **129.32** (MIL)



TAXI



RWY No	Dimension (m) - Surface	TORA (m)	LDA (m)	Strength	Lights
06 24	732 x 18 Grass	732	732	2t AUW	—

Intense glider flying activity, mainly on Sat, Sun & Hol.

High-tension line 600m in front of RWY 24, 200' SFC.

Motorway lighting 250m in front of RWY 24, 50' SFC.

RWY 24: After landing, vacate to the left and taxi along the southern side of RWY.

RWY 06: After landing, vacate to the left and taxi along the northern side of RWY.

Intense activité planeurs, surtout les Sat, Sun & Hol.

Ligne haute tension 600m avant RWY 24, 200' SFC.

Eclairage d'autoroute 250m avant RWY 24, 50' SFC.

Piste 24: après atterrissage, dégarer par la gauche et taxi au sud de la piste.

Piste 06: après atterrissage, dégarer par la gauche et taxi au nord de la piste.